



- Installation and wiring of luminaire must be in accordance with all applicable local codes.
- Installation, inspection, and maintenance of luminaires should be performed by a qualified electrician.
- DO NOT make or alter any open holes in the luminaire. Do not modify the luminaire.
- DO NOT install damaged product.
- Make sure electrical power is OFF before and during installation and maintenance.
- Make sure the equipment is properly grounded.
- Make sure the supply voltage is same as the rated fixture voltage.

LED Ceiling light  
DOR/DOS

DOR450

DOR320

DOR260

DOR360

DOR300

DOS320

DOS260

DOS360

DOS300







IP54

Required Tools













WARNING:







Check that the power is off before  
conducting any maintenance and  
assembly work

Caution,danger of electric shock

The installation and commissioning of the  
luminaire as well as any modification to the  
luminaire may only be performed by authorized  
personnel (qualified electrician).

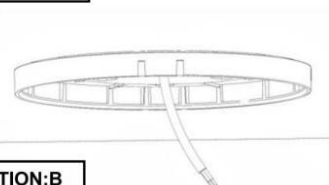
Step:1



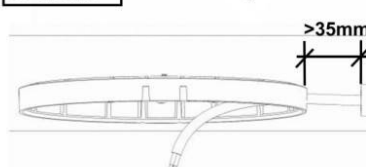
STEP:2



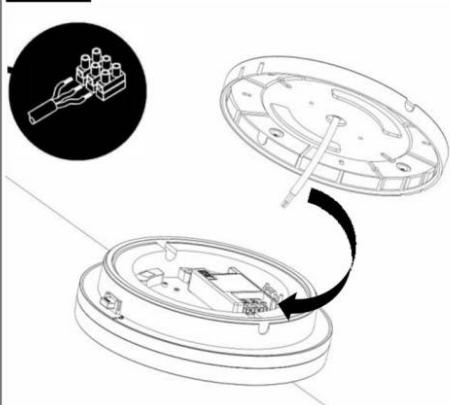
OPTION:A



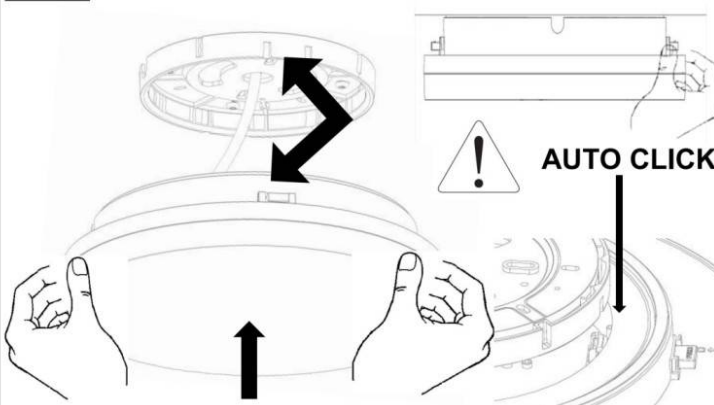
OPTION:B



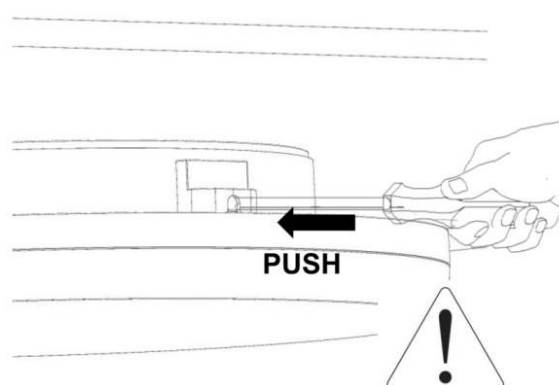
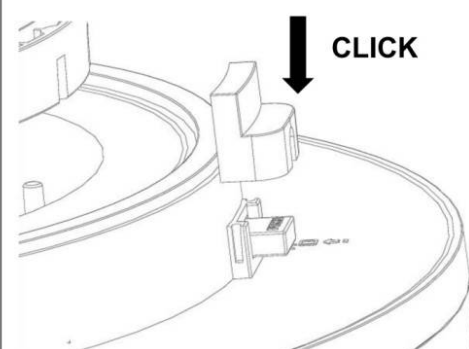
STEP:3



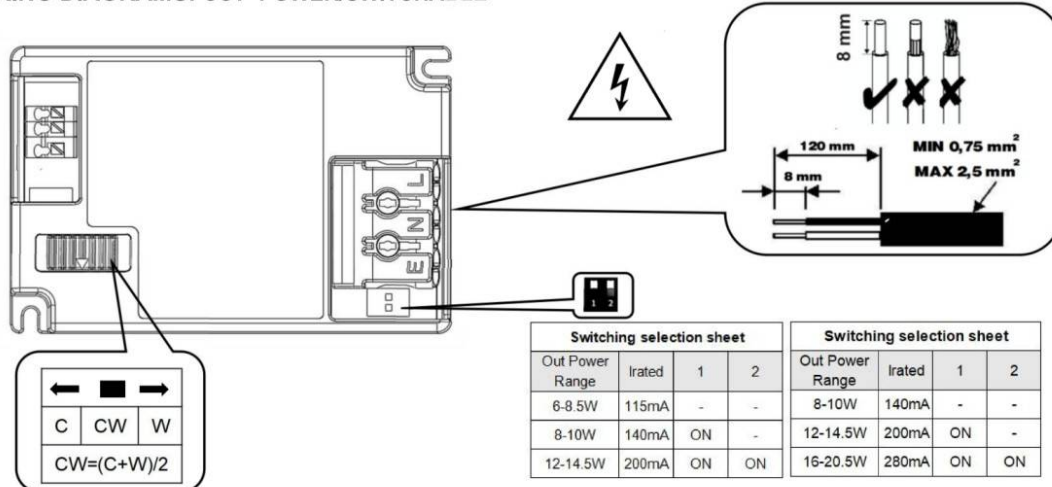
STEP:4



OPTION--SAFETY COVER



## I. WIRING DIAGRAMS: CCT+POWER/SWITCHABLE



## II. WIRING DIAGRAMS: CCT+POWER/SWITCHABLE+SENSOR/EM2



## III. WIRING DIAGRAMS: CCT+DALI (TCI DT6)

